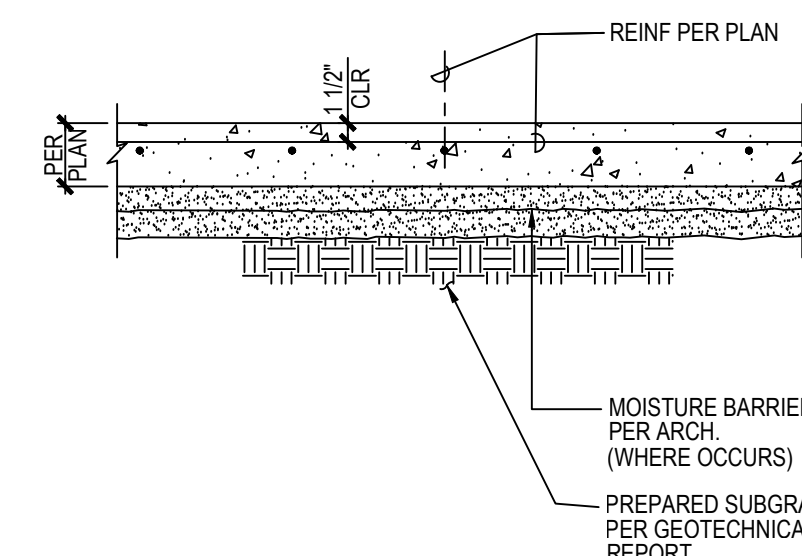


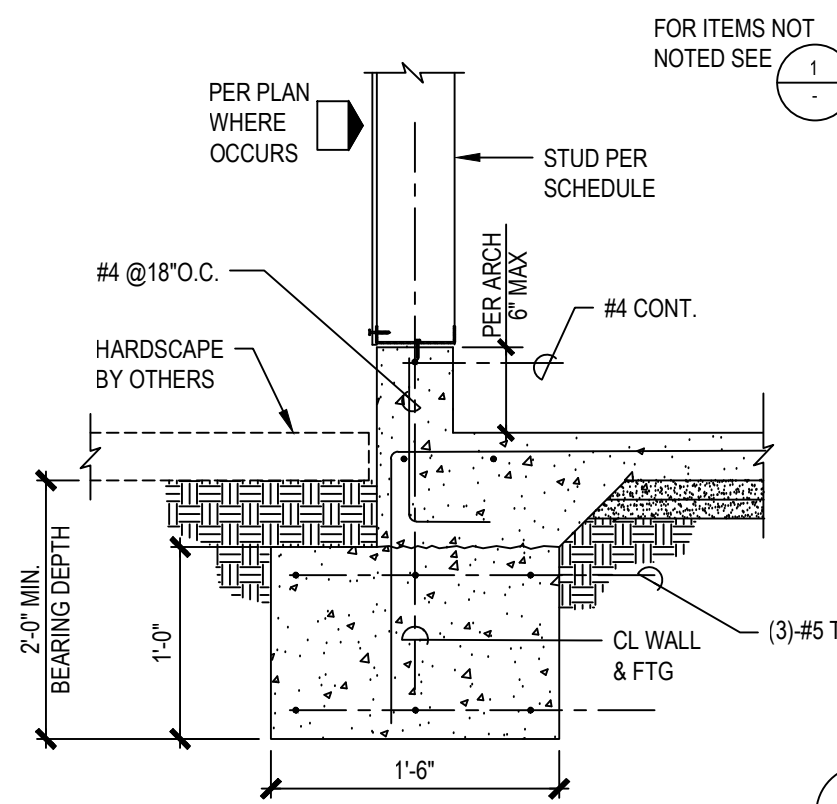
## TYPICAL SLAB ON GRADE DEPRESSION

TYPICAL SLAB ON GRADE  
2100-01

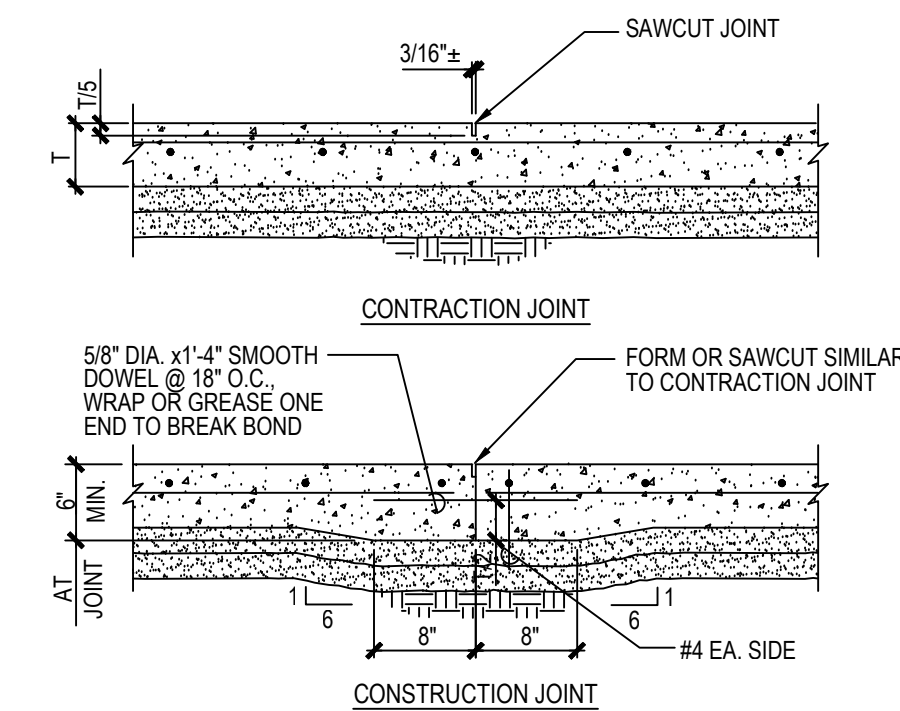
CONC. f=3000 PSI						CONC. f=4000 PSI					
BAR SIZE	SPUCE			DEVELOPMENT		BAR SIZE	SPUCE			DEVELOPMENT	
	TOP	OTHER	TOP	OTHER	HOOKED		TOP	OTHER	TOP	OTHER	HOOKED
3	29	22	22	17	9	3	25	20	19	15	8
4	38	29	29	22	11	4	33	25	25	19	10
5	47	36	36	28	14	5	41	31	31	24	12
6	56	43	43	33	17	6	48	38	37	29	15
7	82	62	63	48	20	7	70	55	54	42	17
8	94	72	72	55	22	8	81	62	62	48	19
9	105	81	81	62	25	9	93	70	70	54	22
10	117	91	91	70	28	10	103	79	79	60	25
11	131	101	101	78	33	11	113	87	87	67	27

- | NOTES:  |   |
|---|---|
| 1. SCHEDULE VALUES FOR DEVELOPMENT ARE BASED ON ACI 318, SECTION 25.2 AND 25.3 FOR GRADE 60 BARS. | 6. TOP BARS ARE STRAIGHT HORIZONTAL BARS LOCATED SUCH THAT MORE THAN 12 INCHES OF FRESH CONCRETE IS PLACED BELOW.                           |
| 2. SCHEDULE VALUES FOR SPLICES ARE BASED ON ACI 318, SECTION 25.2 FOR CLASS B SPLICES.            | 7. OTHER BARS ARE STRAIGHT HORIZONTAL BARS LOCATED SUCH THAT 12 INCHES OR LESS OF FRESH CONCRETE IS PLACED BELOW OR STRAIGHT VERTICAL BARS. |
| 3. CLEAR SPACING BETWEEN BARS BEING SPLICED OR DEVELOPED SHALL BE 2 BAR DIAMETERS (MIN).          | 8. HOOKED BARS ARE VERTICAL OR HORIZONTAL BARS TERMINATING WITH STANDARD HOOKS THAT COMPLY WITH DETAIL 5.                                   |
| 4. CONCRETE CLEAR COVER FOR BARS BEING DEVELOPED SHALL BE 1 BAR DIAMETER (MIN).                   |   |
| 5. DEVELOPMENT AND SPLICE LENGTHS ARE GIVEN IN INCHES.  |   |

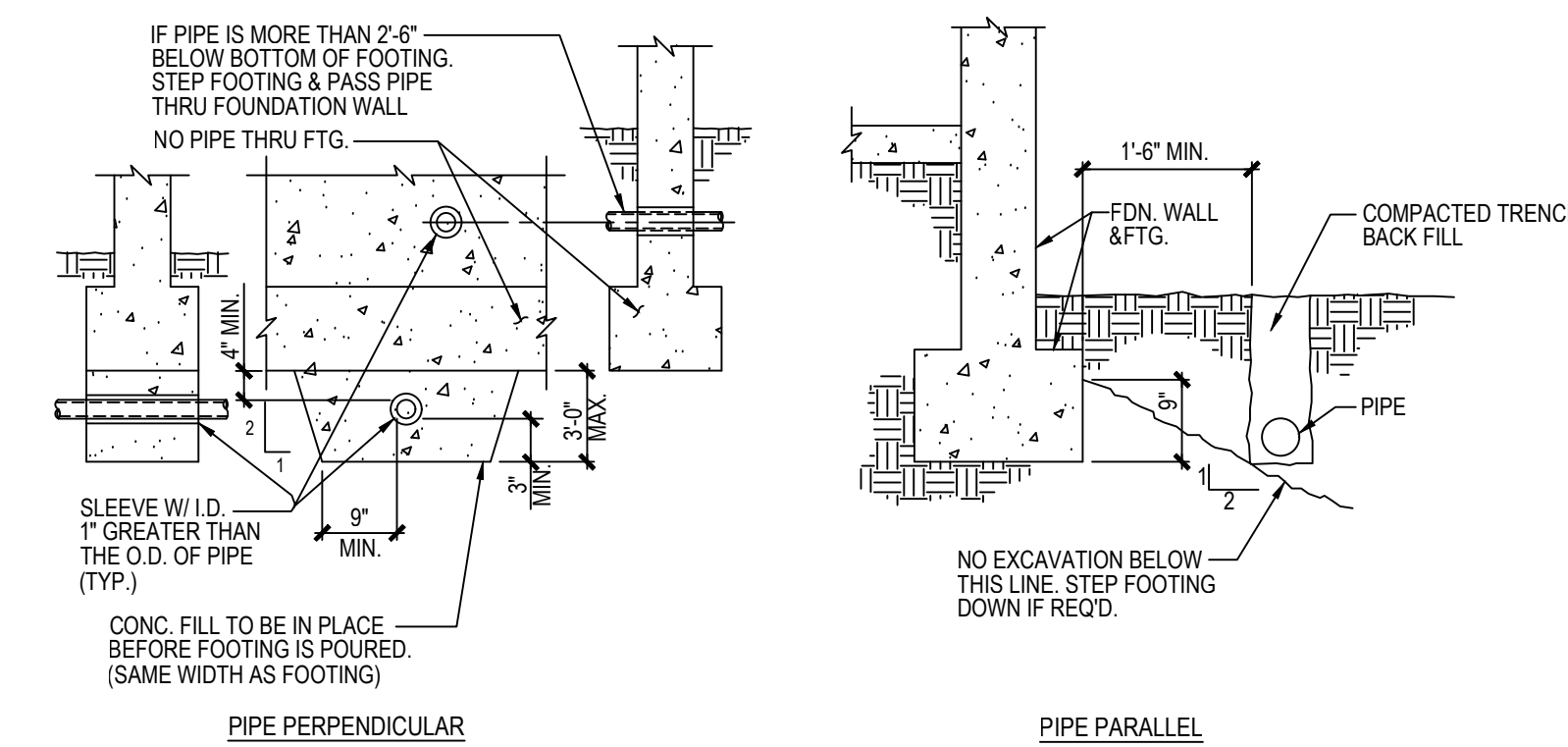
REBAR SPLICE AND DEVELOPMENT IN NORMAL WEIGHT CONCRETE, U.O.N. 1200.01



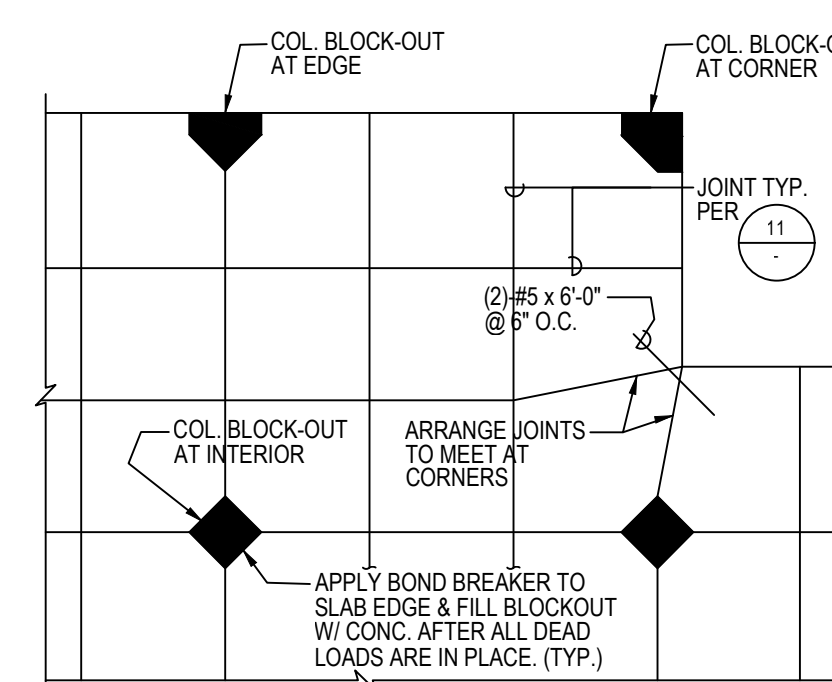
(17)



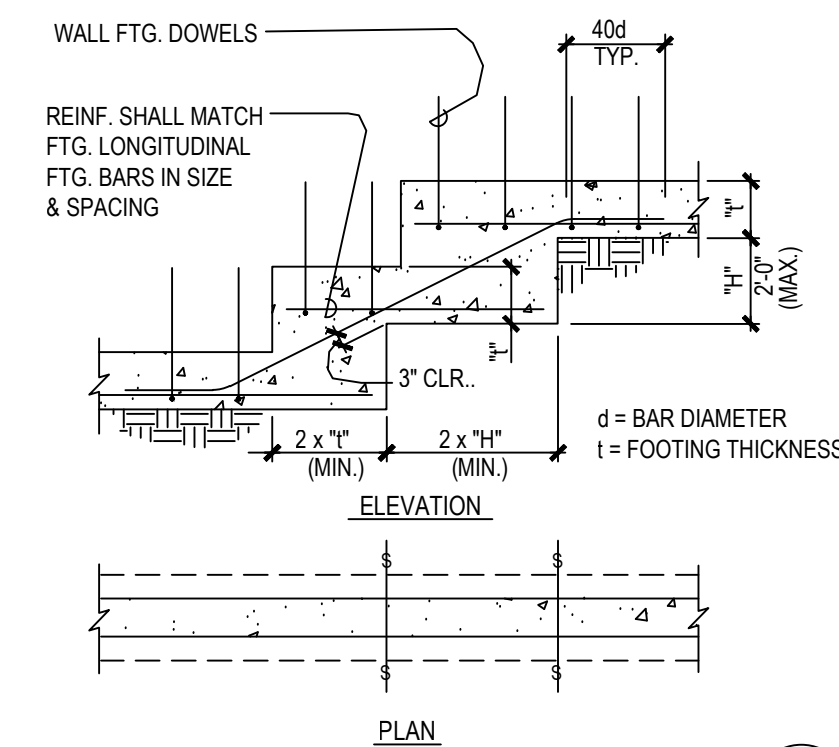
## TYPICAL SLAB ON GRADE JOINTS



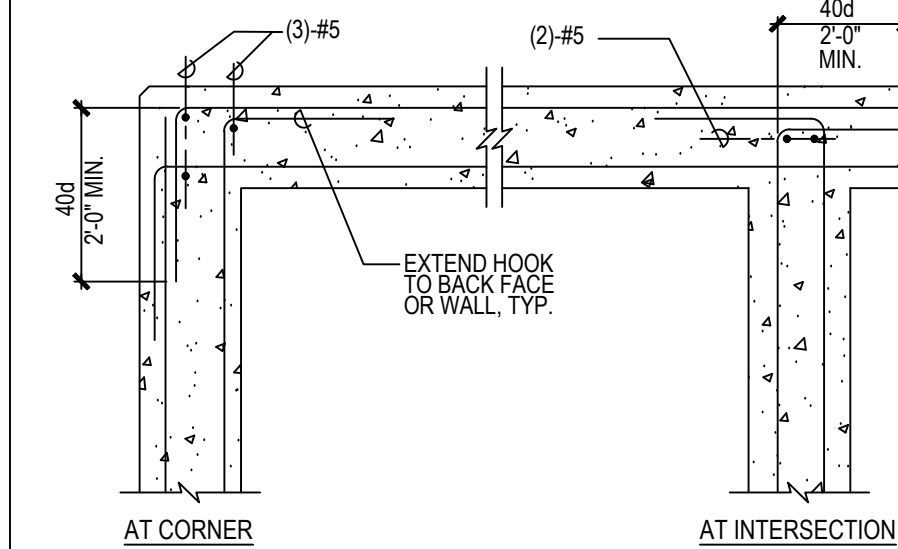
TYP. PIPE ADJACENT TO FOOTING



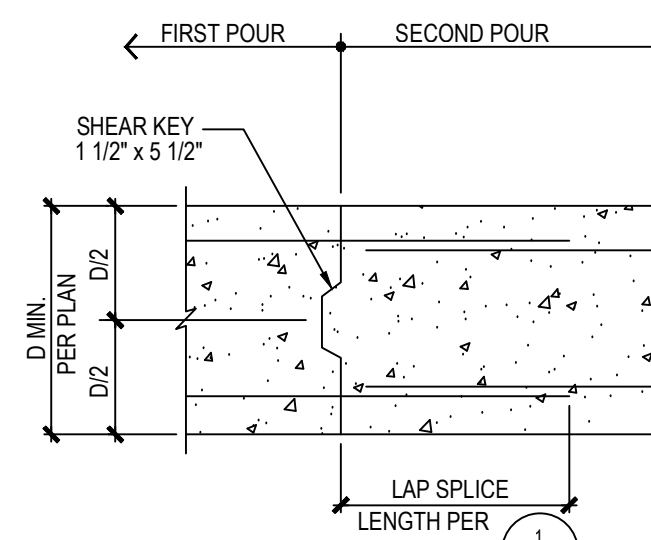
TYPICAL SLAB-ON-GRADE



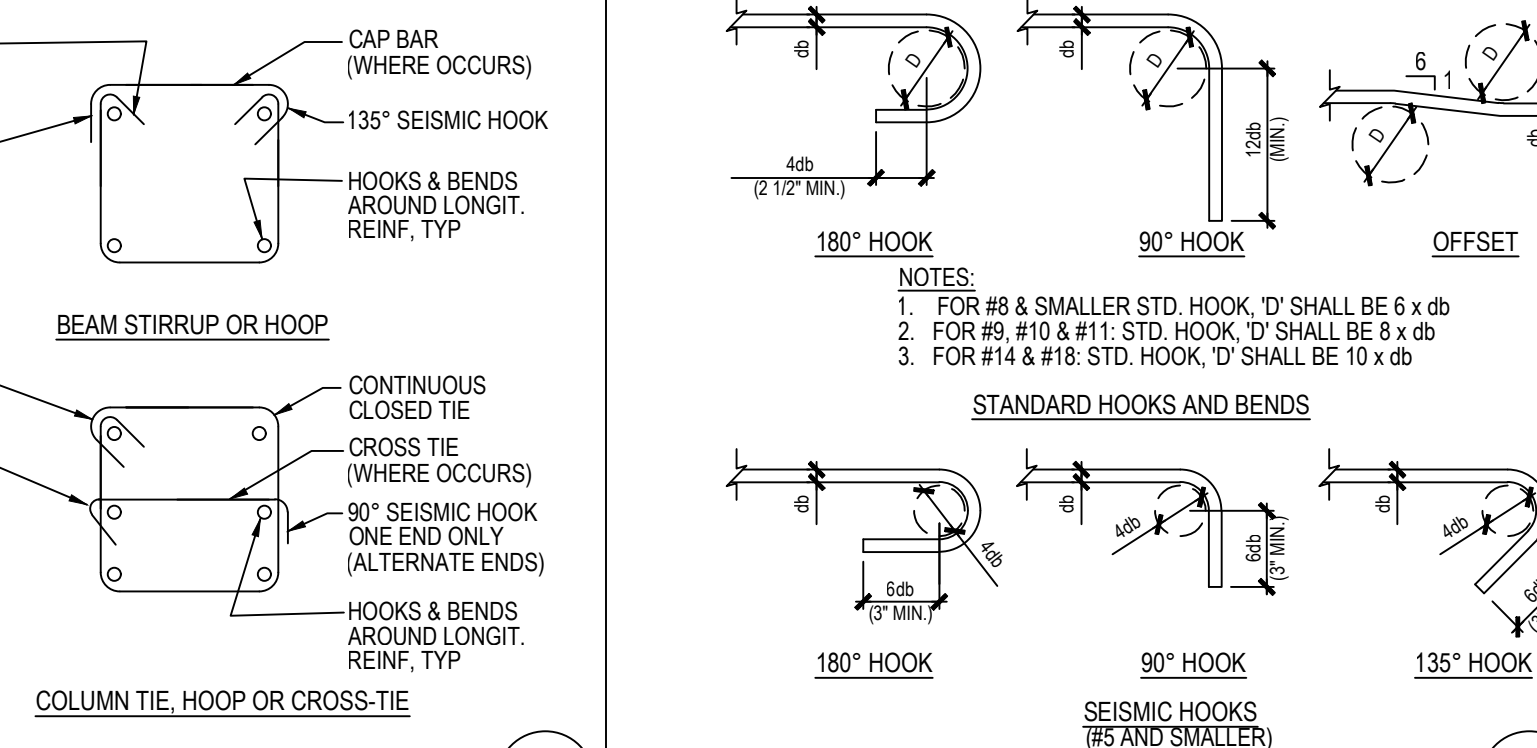
TYP. STEPPED FOOTING



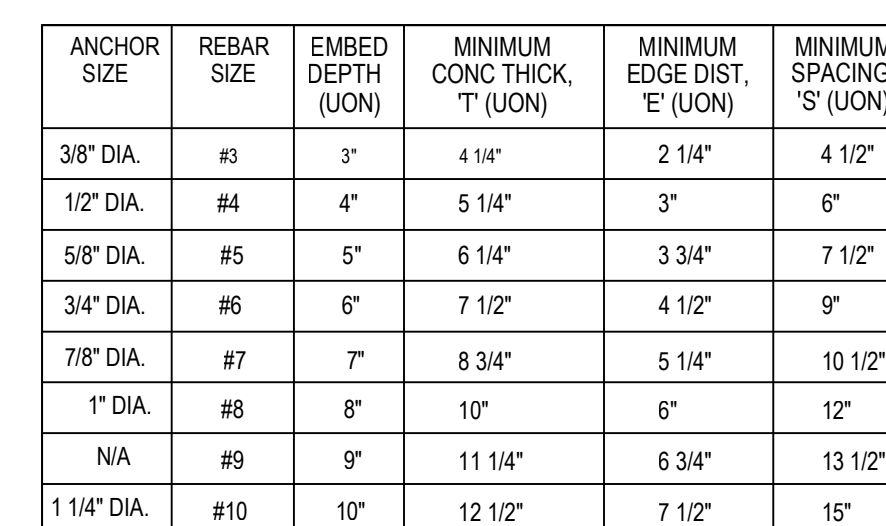
TYP. REINF. AT INTERSECTION



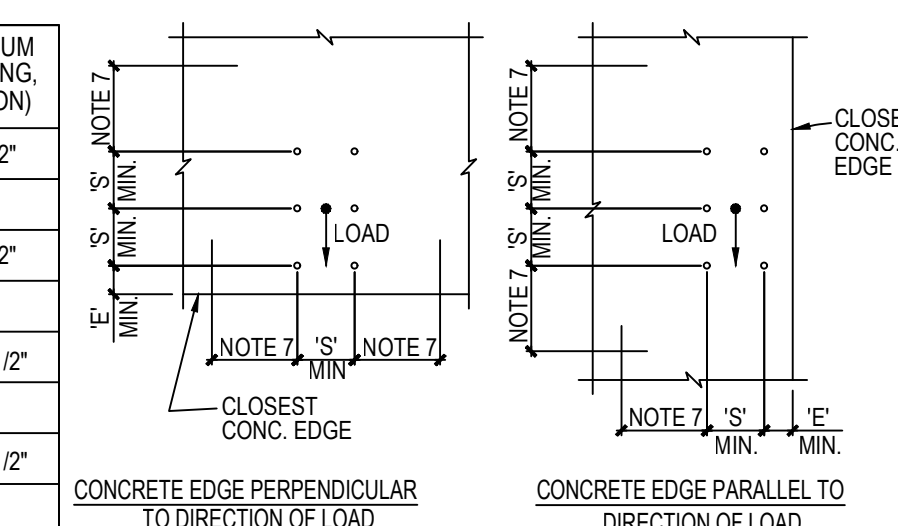
TYP. FOOTING CONSTRUCTION JOINT



TYPICAL REINF. BAR BENDS AND HOOKS



### ADHESIVE ANCHOR SCHEDULE



5